



Brooklyn Shore

PRIVATE WATERFRONT LOTS



LOCATION

30 minutes from Bridgewater,
5 minutes to Liverpool

LOT SIZE

2.5–6 acres

WATERFRONT

Up to 1550 Feet

ORIENTATION

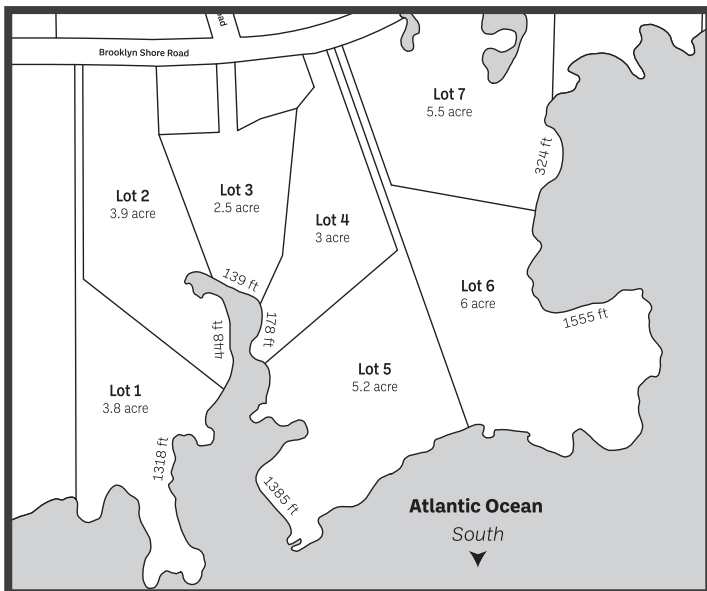
South Facing

PRICE

\$125,000 – \$175,000

CALL STEVE FOR PRIVATE VIEWING
902-818-1601

Own one of the views that makes Nova Scotia famous with this rare offering of oceanfront lots. Choose your own private sand beach or a personal cove. Each morning, your water view will be different – will the waves wake you up as they crash into the granite rocks, or will the water be quiet and serene? Imagine watching the full moon cast light on the ocean as you raise a toast with your friends to another spectacular day at the shore while overlooking the everchanging ocean from your deck. These extra-large lots are perfect for your exclusive get away. Forget your urban lifestyle, relax with the smell of salt air and watch the deer in your yard. Your biggest challenge here will be choosing lobster or halibut – who says life at the beach is easy? These are hard choices you will face. I hope you are prepared!



ASK US ABOUT

- ☒ In house financing on your lot.
- ☒ Designing and building your dream home or cottage.
- ☒ Preparing your building site with driveway, sewer, septic or more.
- ☒ Need a dock? We supply Candock products – the best floating dock on the market.
- ☒ Selling your property? We buy. Let's talk!
- ☒ Our protective covenants designed to maintain your lot value.

STEPHEN O'LEARY | 902.818.1601 (Direct) | stephen@watersedgeLL.com |   

Visit our website for more photos and drone video

www.livewatersedge.ca