



Sand Lake

PRIVATE WATERFRONT LOTS



LOCATION

30 minutes to Kentville,
30 minutes to Chester,
10 minutes to New Ross

LOT SIZE

1.5-2 Acres

WATERFRONT

150-200 Feet

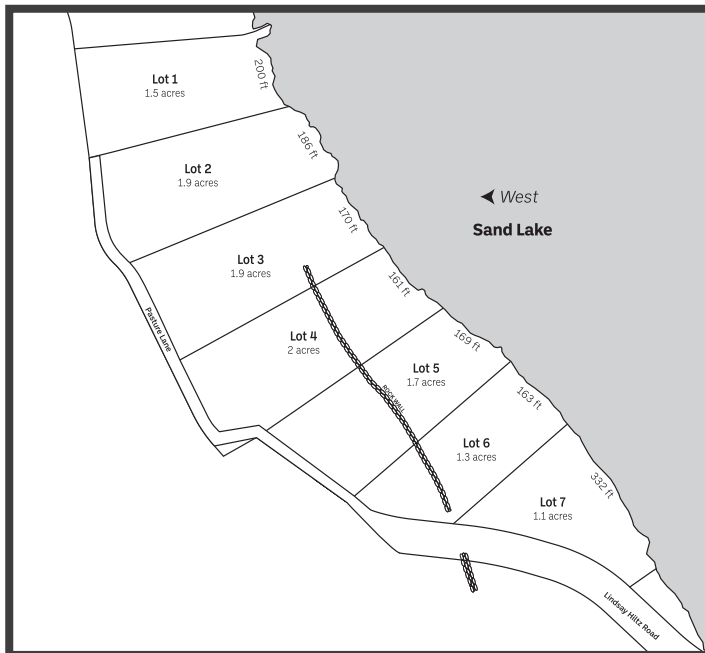
PRICE

\$89,900

CALL STEVE FOR PRIVATE VIEWING

902-818-1601

This is a small but deep lake and is perfect for all of your favorite water activities! Bring your family for the resort-like feel of this spring fed lake with crystal clear and sparkling water. Your special lot will have 160+/- Ft of direct water frontage and, at 1.5-2 acres in size, your lot will have more than enough room to park all of your water toys. Well maintained roads by the province ensure year-round access, whether a cottage or home. Lots are ready to go, partially cleared and landscaped so pack up the family to enjoy this summer on Sand Lake!



Only a few lots left until sold out!

ASK US ABOUT

- In house financing on your lot.
- Designing and building your dream home or cottage.
- Preparing your building site with driveway, sewer, septic or more.
- Need a dock? We supply Candock products - the best floating dock on the market.
- Selling your property? We buy. Let's talk!
- Our protective covenants designed to maintain your lot value.

STEPHEN O'LEARY | 902.818.1601 (Direct) | stephen@watersedgeLL.com |



Visit our website for more photos and drone video
www.livewatersedge.ca