



# Seven Mile Lake, East Clifford

## PRIVATE WATERFRONT LOTS



**LOCATION**  
15 minutes from Bridgewater

**LOT SIZE**  
2-7 acres

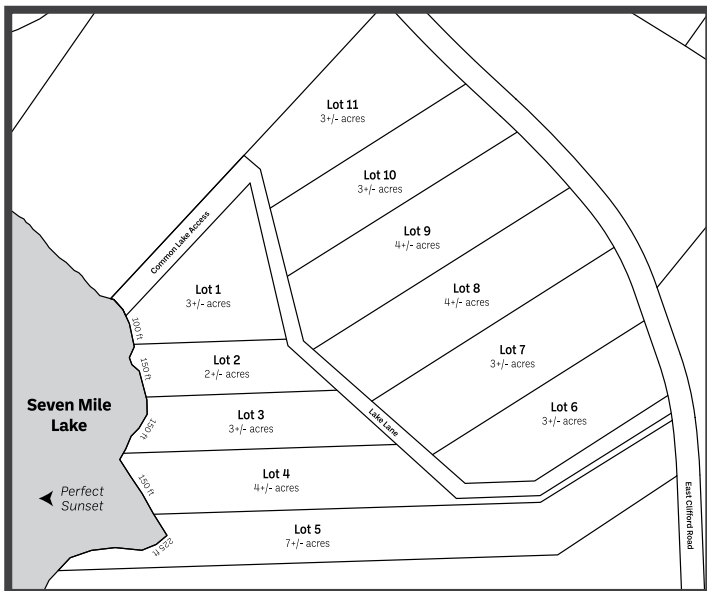
**WATERFRONT**  
100-225 Feet

**ORIENTATION**  
West Facing

**PRICE**  
\$30,000-\$150,000

**CALL STEVE FOR PRIVATE VIEWING**  
902-818-1601

Are you a true aquaphile? Are you an enthusiast of all things related to water? These very private, direct waterfront lots have flat building sites that are well treed and check off all the boxes! Seven Mile Lake is the midpoint of three adjoining lakes – you can also access both Rhyno Lake and Hirtle Lake – all from your private beach. Bring your powerboat and personal watercraft to hit the water, watch nature and canoe or kayak for miles. Love to waterski or wakeboard? Leave your personal dock for an afternoon of sun, fun and laughter. Entertain your urban friends on the water before a BBQ with evening drinks. Watch the sunset every night on your deck as all lots face West. Seven Mile Lake is where you can explore the water for hours, watch the deer and create a summer to make others envious. *A select group of water view lots are also available.*



## ASK US ABOUT

- In house financing on your lot.
- Designing and building your dream home or cottage.
- Preparing your building site with driveway, sewer, septic or more.
- Need a dock? We supply Candock products - the best floating dock on the market.
- Selling your property? We buy. Let's talk!
- Our protective covenants designed to maintain your lot value.

**STEPHEN O'LEARY** | 902.818.1601 (Direct) | [stephen@watersedgeLL.com](mailto:stephen@watersedgeLL.com) |   

Visit our website for more photos and drone video  
[www.livewatersedge.ca](http://www.livewatersedge.ca)